



Redhill Philatelic Society

∞ 75th Anniversary Year ∞

Newsletter October 2012

Volume 15 No. 4



Forthcoming meetings:

Tuesday Evenings:

6th Nov - Visit from Orpington

20th Nov - Dealers Evening

4th Dec - "Essays" - Mr R Wheeler

18th Dec - Christmas Meeting

2013

1st Jan - "Around the Borough" -
The Secretary's Evening

15th Jan - Displays - Mr P Ring
& Mr G Newey

Friday Afternoons:

26th Oct - Display - Mr M Bament

30th Nov - Africa - All Members

14th Dec - Christmas Displays &
Dinner

2013

25th Jan - G.B. Part 2 - Mr E Walker

Editorial:

With the start of the new philatelic season at Redhill some housekeeping has been undertaken on the Society website, which has resulted in programme of meetings being updated and the editions of the newsletters issued over the last year becoming available to view on-line.

If you have access to the internet, please do take a few minutes to view the website (<http://www.redhillphilatelicsociety.co.uk/>), the Committee would appreciate your feedback on the look of the site and what is or could be included.

Your attention is drawn to the *Members Displays* tag on the Links Page of our website that provides access to pages loaded on *Flickr* by our member Bob Wheeler. The linked pages show aspects of some of Bob's collections. The images are loaded under the Redhill banner, which will hopefully point collectors who visit the *Flickr* pages toward our society. Space in the newsletter and the number of illustrations is limited by the cost of printing. Cost constraints are very much reduced by publishing on the worldwide web. If you have a few written up album pages that you feel might be of interest to other collectors, or have produced an article on a pet philatelic topic that you would like to have made available to a wider public, please contact your Newsletter Editor to discuss how the Society can help publish the material on-line.

Finally a quick reminder, do not forget the forthcoming dealers evening on 20th November; a golden opportunity to purchase some items toward a display for the Society's Competitions evening in March!

Robert Hurst

3 Bletchingley Road, Merstham. RH1 3HT

London Transport Museum Postcards

Relating to Reigate and Surrounding Areas

(Update no 5 – Original articles in Vol 12 No.3, first update in Vol 12 No.4, second update Vol.13 No.4, third update in Vol 14 No.3, fourth update in Vol 14 No.4).

Just when you think that all the relevant cards have been identified and listed, two more turn up:

LTM Ref.	Description on the Postcard	Notes
EX1	Reigate. Artist; Edward McKnight Kauffer Poster published in 1915	Image the same as LTM 689
EX2	Godstone. Artist; Edward McKnight Kauffer Poster published in 1916	Reproduction of a poster showing quarry workings cut into the North Downs (including representations of the rail works serving the quarry)

Both cards are Copyright Transport for London 2007. The cards were purchased from the London Transport Museum Shop in Covent Garden. While the printing is up to the usual very high standards of London Transport cards the guillotining and (to a lesser extent) the centring of the image on some of the cards on sale was poor.

The Society Auction

The Auction is in the programme of Society events for the evening of Tuesday 19th February 2013. While the date is four months away time does have to be allowed to receive and check the lots, draw up a description for the auction list, printing and distribution of the catalogue. Accordingly our Hon. Auctioneer Paul Munro will be happy to receive items for the February sale with immediate effect.

Paul attends most of the Tuesday evening meetings, where he will be pleased to accept items for inclusion in the Sale, or discuss any questions you may have regarding the Society Auction.

The Newsletter - A Reminder

Would you prefer to receive your Newsletter by e-mail?

Like any other organisation the Redhill Philatelic Society is not immune to the rising cost of postage and printing. To date the newsletter has been printed and posted to members, with back numbers being gradually added to the Society website. It is the Committee's intention that the Newsletter continues to be posted to those who wish to receive it in paper form, but to help contain costs an e-mail data base is to be created for those who would prefer to receive the Newsletter via the internet.

If you would like to receive the Newsletter electronically please provide your e-mail address (clearly printed) to:

Derek White, 19 Kingsley Grove, Reigate RH2 8DU

Or pass a note of your current email address to Derek at one of the forthcoming meetings.

Up Coming Events:

- | | |
|------------------|--|
| 20 October 2012 | Kent Federation of Philatelic Societies – Autumn Rally (Saturday: 10:00 – 16:00)
(Organised by Bromley & Beckenham Philatelic Society)
Langley Park School for Boys, South Eden Park Road, Beckenham. BR3 3BP |
| 20 October 2012 | Hampex 2012 (Hampshire Federation Convention & Fair, Saturday: 10:00 – 16:30)
Wickham Community Centre, Mill Lane, Wickham, Near Fareham PO17 5AL |
| 18 November 2012 | Sevenoaks Stamp Fair (Sunday: 10:00 – 16:00)
Knole Academy, Bradbourne Vale Road, Sevenoaks, Kent TN13 3LE |
| 24 November 2012 | Surrey Post Card Club Fair (Saturday: 10:00 – 16:00)
St. Peter's R.C. School, Horseshoe Lane East (off A246), Mewsey, Guildford. GU1 2TN |
| 30 December 2012 | Tolworth Postcard & Ephemera Fair (Sunday: 10:00 – 16:00)
Tolworth Recreation Centre, Fullers Way, Tolworth KT6 7LQ |

Subscription Reminder:

Subscriptions for the 2012/2013 season became payable on 1st September. The rate remains at £15-00. Paying promptly helps the Society by removing the cost of chasing late payers, and allows the Treasurer to accurately budget for the coming year. If you have not already paid please send your subscription cheque made payable to "Redhill Philatelic Society" to:

Mr Tony Sanson
43 Nutfield Road
Merstham
Surrey RH1 3EN

Alternately Tony usually attends the Tuesday evening meetings and will be pleased to accept payment in person by cash or cheque.

Reports of Society Meetings:

5 June 2012 – Visit from Epsom & Ewell Philatelic Society

Our two visitors from Epsom and Ewell, Mr Robert Motford and Mr Simon McCarthur took as their common theme of Germany, a country popular with many members of the Redhill Philatelic Society.

Mr Motford started the evening with a display of the post-World War I inflation period to 1923. In the wake of the Great War all the European combatant nations were heavily indebted. In addition Germany faced demands for reparations from the victorious allies, which further destabilised the fragile economy. Inflation began to take hold. As prices increased postage rates too were raised. With each increase the German Post Office brought out revised denominations to cover the new rates. Robert exhibited mail each bearing single stamps illustrating the increases in the cost of posting an ordinary letter, and the increased frequency of the changes culminating in the hyper-inflation of 1923. The use of single stamps was contrasted with the official postage stamps which were given a lower production priority and examples were shown of envelopes covered with official stamps to pay for their carriage. Examples were also displayed of local surcharged stamps and "cash paid" hand stamps sanctioned to alleviate shortages

The inflation also affected other services offered by the German Post Office including Cash on Delivery, Airmail, domestic and international parcels and again specimens of each class were shown.

From the Weimar Republic the focus moved to the Third Reich for Mr McCarthur's display. The first half took as its subject the cruises organised for Nazi Party members following their rise to power in 1933. The first cruise sailed from Hamburg in 1933 to the Norwegian fjords. From 1934 the range of destinations increased with Madeira and the Italy being added. A berth cost around 500 Reich Marks per person, a price that put the cost firmly out of reach of the working class, even so over one million passengers are known to have taken the cruises. Simon showed postcards of the ships (exterior and interior, some with ship's cachets applied to the cards), newspapers produced on the ships, menus and guides, plus an album/scrap book produced by one family of a voyage they took. To conclude his display Simon showed postcards produced in the 1930's for the Nuremburg Rallies.

Mr Tony Sanson gave the vote of thanks.

3 July 2012 - Europe - All Members

An informative and wide ranging set of displays were shown by members under the banner of "Europe" for the closing meeting of the season, these included:

- | | |
|------------------------|--|
| 1. Mr Robert Wheeler | 1908 Franco-British Exhibition & Scottish Aerograms |
| 2. Mr Geoff Richardson | Germany – Third Reich stamp booklets 1933-42 |
| 3. Mr Bert Latham | Mail addressed to destinations in Europe |
| 4. Mr David Ainsley | Belgian stamps 1914-18 |
| 5. Mr Peter Ring | 200 th Anniversary of the birth of Charles Dickens
+ 25 th Anniversary of the Falklands Conflict
(Items relating the topics to Portsmouth) |
| 6. Mr David Hall | Switzerland Pro Juventute stamp issues |
| 7. Mr Steve Mullany | Italy |
| 8. Mr Les Jobbins | Monaco-Issues by the master engraver Czeslaw Slania |

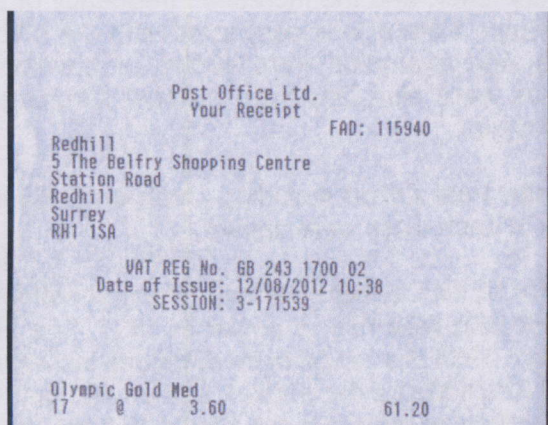
Mr Tony Sanson gave the vote of thanks to those who brought along material to display.

(The meeting of 3 July concludes the reports for the 2011-12 Season).

The London 2012 Olympics and the Post Office in Redhill

Several articles have appeared in the October and November 2012 editions of the philatelic press concerning the stamps issued to mark the games of the 30th Olympiad and Paralympics held in London. The Games themselves have been widely reported as being a resounding success and the philatelic community appear to have been forgiving of the number of stamps issued, even though at the Olympic venues there was no Post Office presence available to the general public*.

A major constituent of the stamps issued to mark the games were to acknowledge the achievement of Team GB members winning Gold Medals. These self-adhesive stamps were issued in mini sheet format of six stamps for the Olympics and two stamps for the Paralympics. Each had a similar pre-printed background design to which was added by a different printer (at one of six locations around the country), a photograph of the Gold medal winning athlete or Team, either competing, celebrating their win or receiving their medal. The mini sheets were sent to post offices in sheets comprising four mini-sheets, separated by rouletted perforations. To the left of the mini sheets is a detachable margin on which is noted the location of the printer.



Above: Fig.1 Receipt from Redhill Post Office showing date of Sunday 12 August 2012

The Olympic Gold Medal stamps were issued on the day following the competitor winning their event at one of 518 designated Post Offices around the country, which included the main office in Redhill situated at the back of the WH Smith & Son shop in the Belfry shopping centre. The programme of releases resulted in the designated Post Offices being opened for business on Sunday 5th and 12th August (Fig 1.).

The initial stocks of the mini-sheets sent to Redhill came from the London based printer but when the office restocked, supplies were received bearing the Swindon imprint (Fig 3 & 4).



London 2012 Olympic Games

Ed McKeever
Saturday 11 August 2012
Eton Dorney



Above: Fig. 2 Ed McKeever Stamp issued Sunday 12 August 2012.

Far left: Fig. 3 and Left: Fig. 4 showing the London and Swindon imprint in the sheet margin.



Stamps for the Paralympic Gold medal winners followed a different schedule of release that did not require Sunday opening of the designated Post Office counters.

Apart from the issue of a stamp in their honour, a post box in the home town of the Gold medal winner was painted Gold, and will remain in that colour to the end of the year. While Paralympian Helena Lucas who won gold in the Keelboat 2.4mR sailing class was born in Redhill, Helen now lives in Reforne, Portland in Dorset where a box has been repainted. However those wishing to see gold pillar boxes need only go as far as Woodcote Road or Mollison Square in Wallington (marking David Weir's achievements) or Ewell Road, Cheam (for Joanna Rowsell (Fig 4 in Centre)).

*There was a Postal Agency in the Olympic / Paralympic Village and the Olympic Media Centre, but these were not accessible by the general public.